

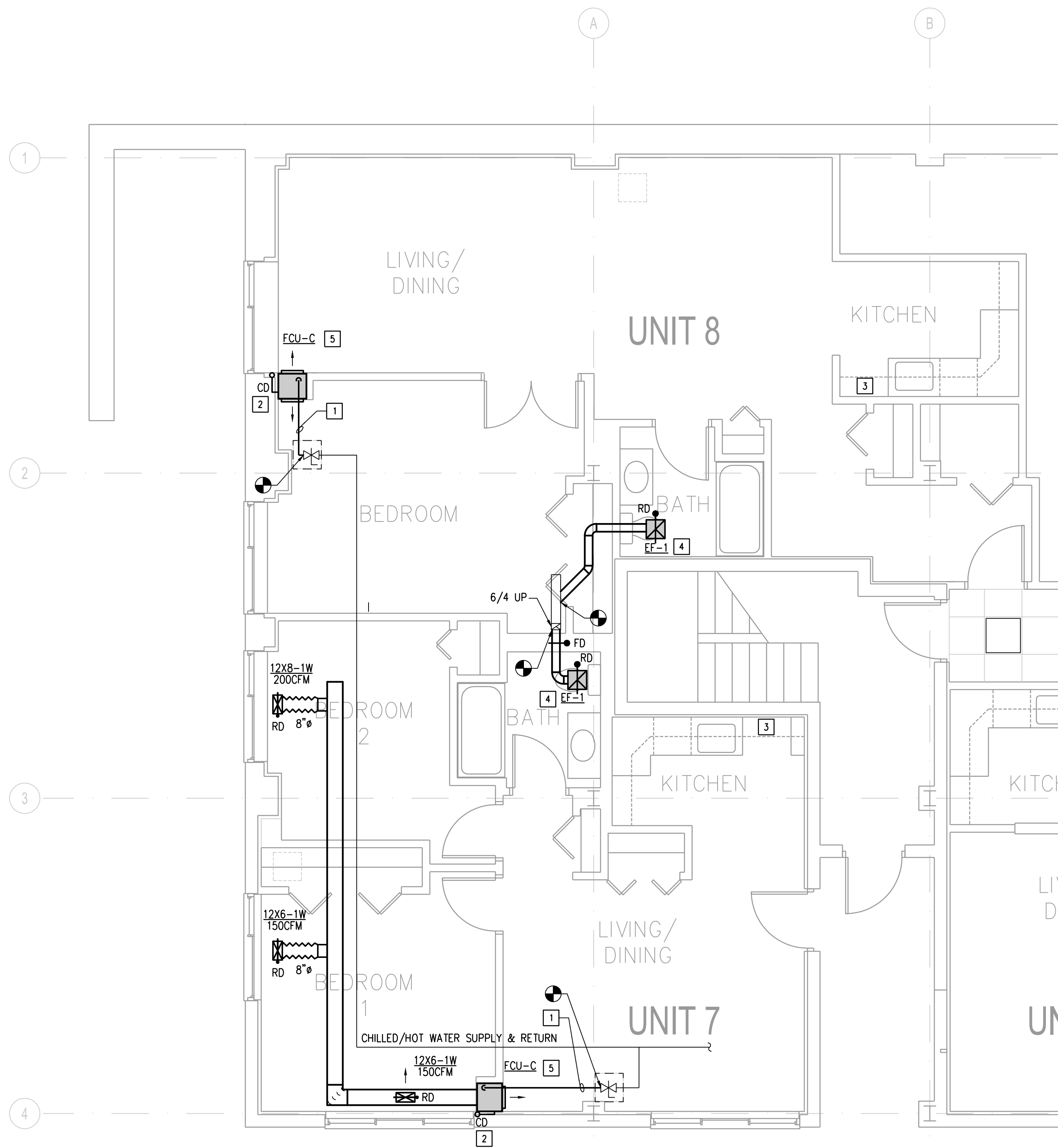


OCI ASSOCIATES, INC.
CORPORATE ENGINEERS
Orlando • Ft. Pierce • West Palm Beach • Ft. Myers • Tampa
Washington, D.C.
7700 Leeburg Pkwy., Suite 201
Falls Church, VA 22044
Phone: (703) 488-0200 Fax: (703) 488-0205
www.ociassociates.com
CERTIFICATE OF AUTHORIZATION #0201

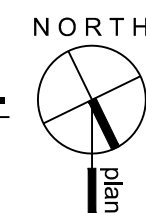
I certify that these documents were prepared by or approved by me and that I am a duly licensed professional engineer under the laws of the State of Maryland, license number 18505 expiration date 6/30/15.

H.V.A.C. KEYNOTES [X]:

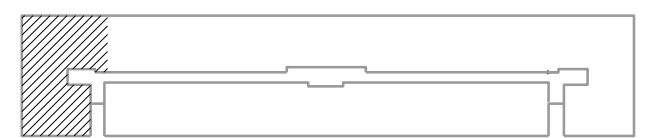
1. FIELD VERIFY LOCATION OF THE EXISTING SUPPLY AND RETURN CHILLED/HOT WATER PIPING AND ISOLATION VALVES. VERIFY CONDITION AND FUNCTION OF EXISTING VALVES. REPAIR OR PROVIDE NEW VALVES AS REQUIRED FOR PROPER FUNCTION. ROUTE NEW 1" COPPER CHILLED/HOT WATER SUPPLY AND RETURN PIPES FROM ISOLATION VALVES AND CONNECT TO EACH NEW FAN COIL UNIT. INSULATE CHILLED/HOT WATER WITH MINIMUM 1" "AP ARMAFLEX LAP SEAL" INSULATION AND SEAL ENTIRE LENGTH OF THE PIPING VAPOR PROOF.
2. ROUTE FULL SIZED CPVC CONDENSATE DRAIN LINE FROM CONDENSATE DRAIN PUMP DISCHARGE FOR EACH FAN COIL UNIT TO EXISTING CONDENSATE DRAIN RISER. INSULATE ALL CONDENSATE LINES WITHIN THE BUILDING WITH 3/4" ARMAFLEX ELECTROMETRIC INSULATION.
3. RE-CIRCULATION KITCHEN HOOD ABOVE RANGE.
4. PROVIDE NEW EXHAUST FAN WITH CEILING RADIATION DAMPER AND BACK DRAFT DAMPER IN RESTROOM. ROUTE 4" Ø EXHAUST DUCT IN EACH RESTROOM TO EXISTING EXHAUST DUCT BRANCH IN THE UNIT. PROVIDE BACK DRAFT DAMPER IN EACH EXHAUST FAN BRANCH.
5. PROVIDE VERTICAL 2 PIPE CHILLED/HOT WATER FAN COIL UNIT WITH RETURN GRILLE ON FRONT BOTTOM AND SUPPLY GRILLES ON FRONT AND BACK CONFIGURATION. COIL PIPING AND CONDENSATE PIPE CONNECTIONS ALL TO BE FROM TOP OF THE UNIT. THERMOSTAT TO BE MOUNTED ON FRONT SIDE OF THE UNIT FACING LIVING/DINING AREA. UNIT TO BE COVERED WITH GYPSUM BOARD AND GRILLES TO BE INSTALLED FLUSH WITH GYPSUM BOARDS ON BOTH SIDES. COORDINATE THE GRILLES FINISHES WITH ARCHITECT.



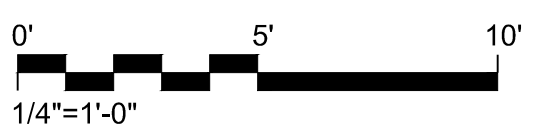
1 PARTIAL BASEMENT FLOOR PLAN - H.V.A.C.
M-202 SCALE: 1/4"=1'-0"



key plan



graphic scales



project: 21413
phase: PERMIT SET
date: 16 February 2015
revisions:

BUILDING 5802 PARTIAL
BASEMENT FLOOR PLAN -
H.V.A.C.

M-202