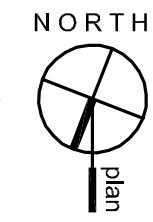
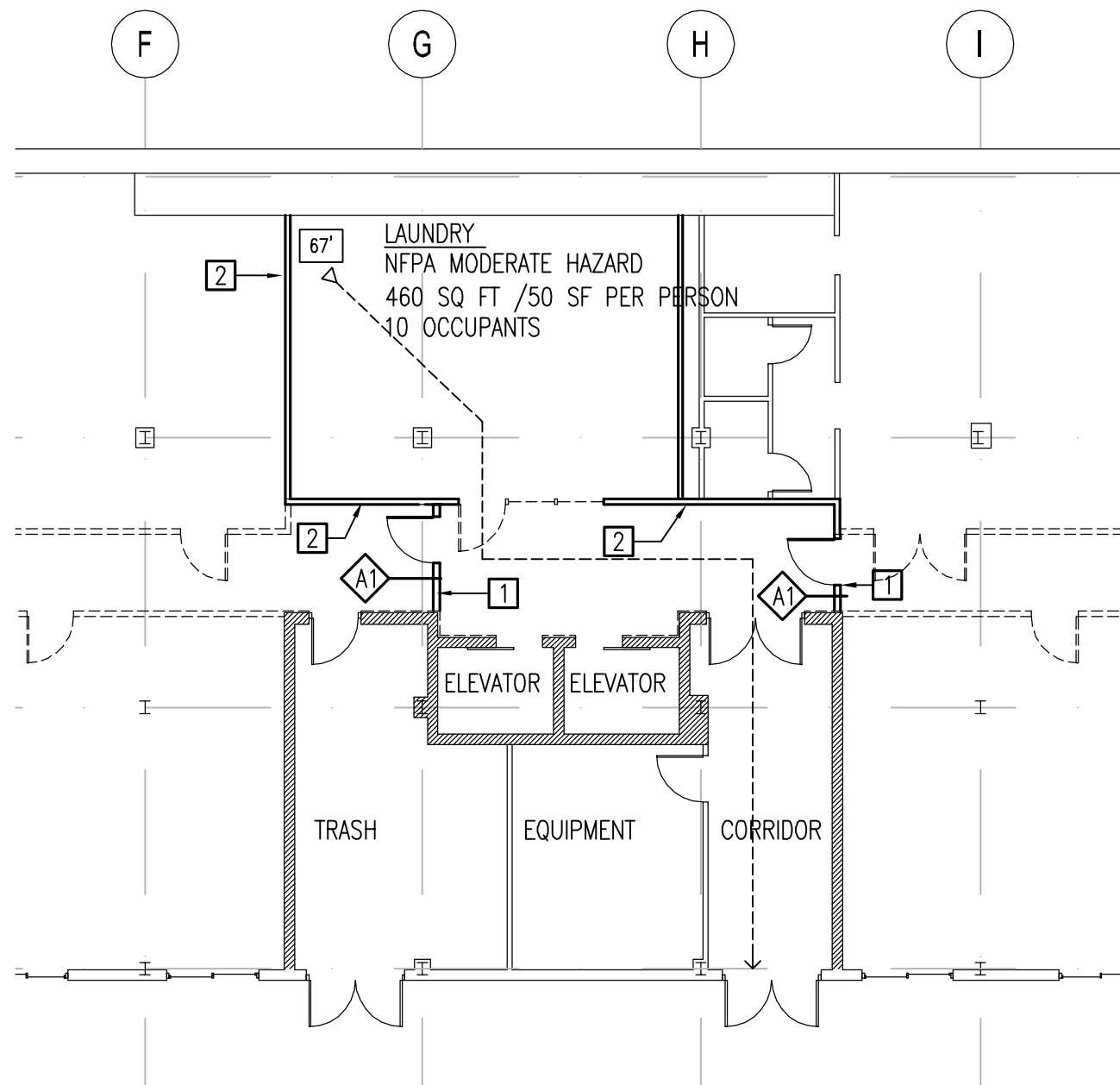


1 5804 LIFE SAFETY PLAN
G003 SCALE: 3/32"=1'-0"

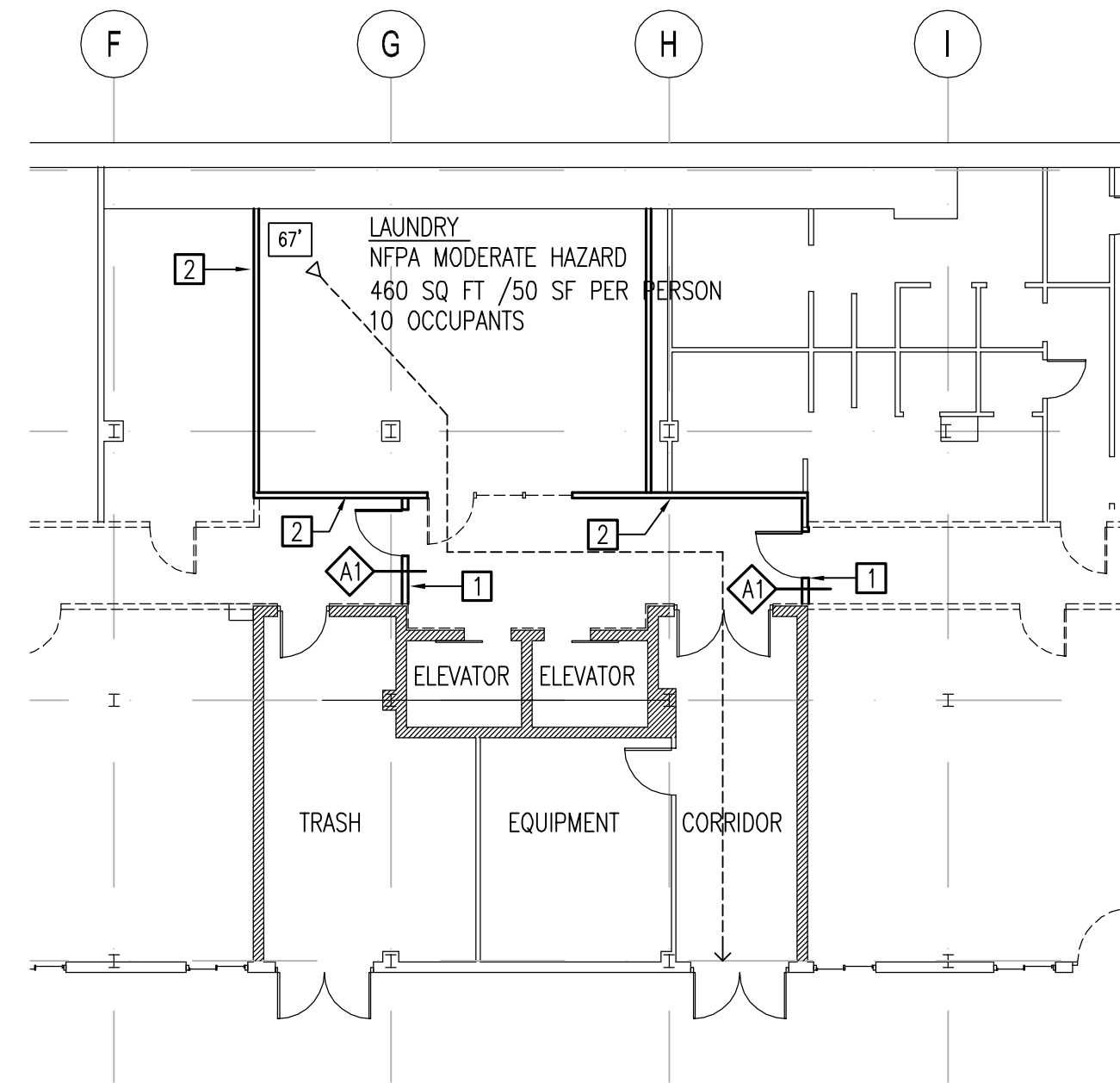


NOTES

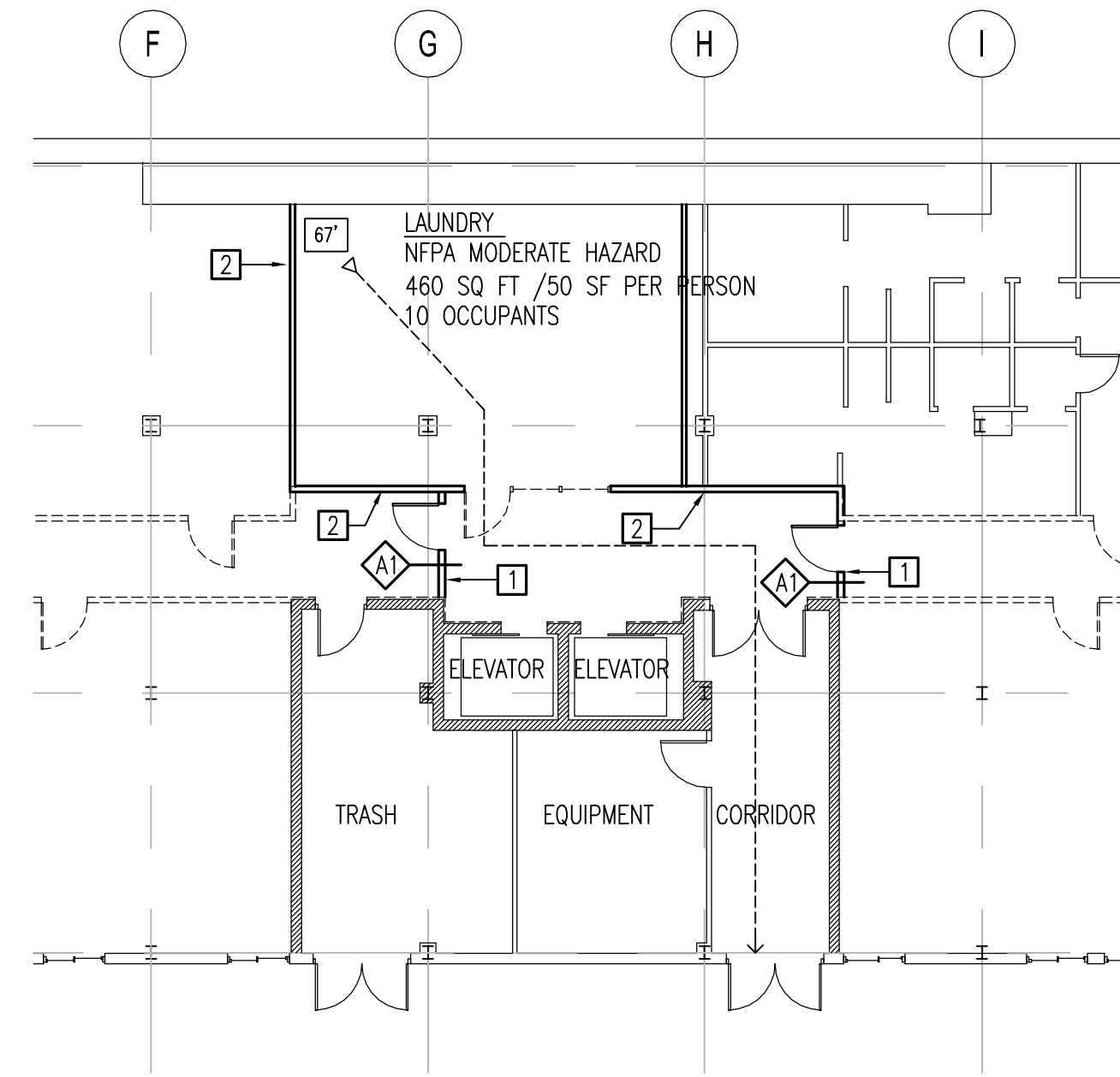
- EXISTING STEEL COLUMNS PROTECTED WITH SPRAY FIREPROOFING, 2-HR REQUIRED
- 14,552 GROSS SQ FT AREA OF BASEMENT WITH 10 STORIES ABOVE. STORIES ABOVE HAVE NO SPRINKLER SYSTEM.
- BASEMENT PROTECTED WITH AUTOMATIC SPRINKLER SYSTEM AND VOICE FIRE ALARM.
- AREA OF WORK IS ENTIRE BASEMENT STORY.



2 5800 TEMPORARY EXIT PLAN
G003 SCALE: 3/32"=1'-0"



3 5802 TEMPORARY EXIT PLAN
G003 SCALE: 3/32"=1'-0"



4 5804 TEMPORARY EXIT PLAN
G003 SCALE: 3/32"=1'-0"

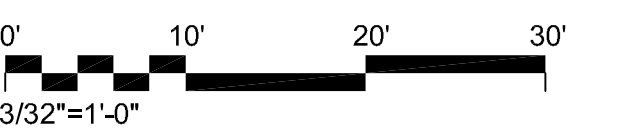
KEY NOTES

- PROVIDE TEMPORARY WALL TYPE A1 FROM SLAB TO UNDERSIDE OF FLOOR DECKING. PROVIDE 20-MINUTE FIRE RATED METAL DOOR AND FRAME. REMOVE WHEN LAUNDRY OPERATIONS ARE CLOSED.
- MAINTAIN EXISTING WALLS AROUND LAUNDRY AND ELEVATOR LOBBY DURING CONSTRUCTION WHILE LAUNDRY REMAINS IN OPERATION.

Legend

- EXISTING 2-HR RATED 8" CMU WALL IBC CONSTRUCTION TYPE #3-1.3
- NEW 1-HR RATED STUD WALL

graphic scales



project: 21413
phase: Permit
date: 16 February 2015
revisions: 18 March 2015 - permit revisions