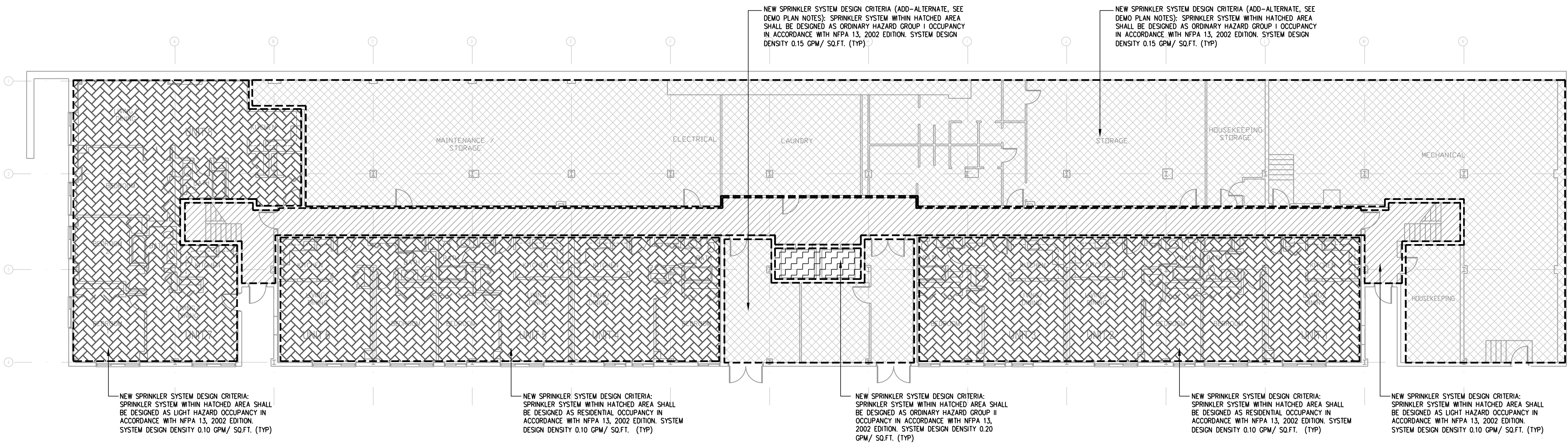
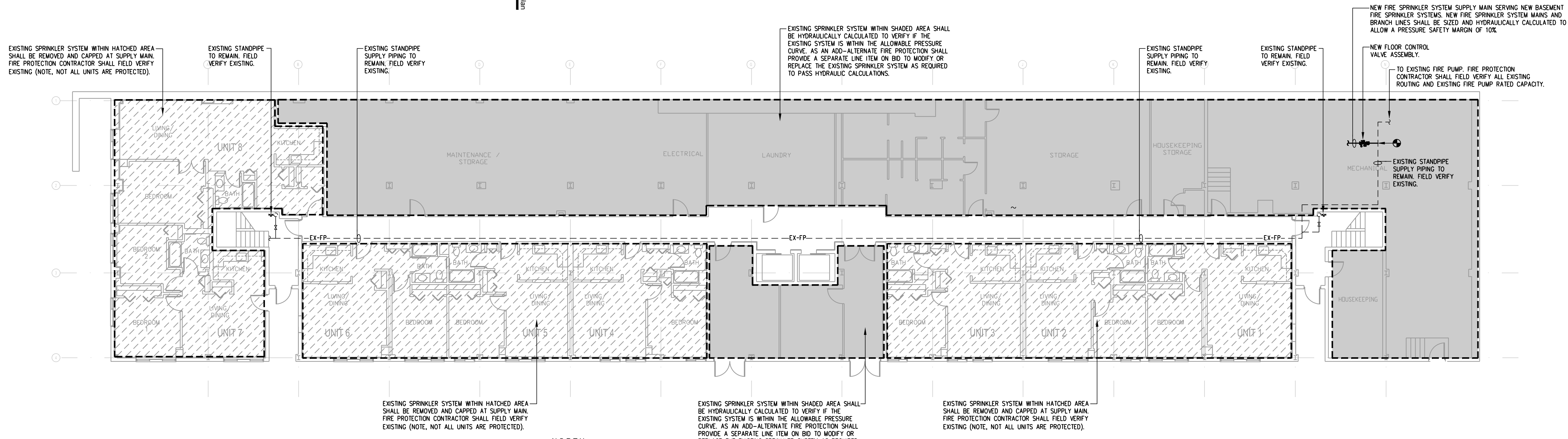


I certify that these documents were prepared by or approved by me and that I am a duly licensed professional engineer under the laws of the State of Maryland, license number 19505 expiration date 6/30/15.



1
F-300
BASEMENT FLOOR PLAN BLDG 5804 - FIRE PROTECTION
SCALE: 3/32"=1'-0"



2
F-300
BASEMENT DEMO FLOOR PLAN BLDG 5804 - FIRE PROTECTION
SCALE: 3/32"=1'-0"

GENERAL NOTES:

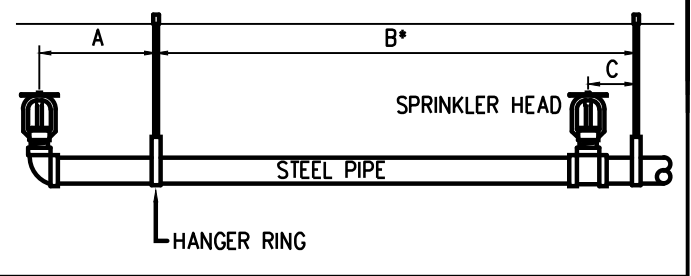
- LOCATIONS OF EXISTING FIRE SPRINKLER PIPING AND EQUIPMENT WHERE DETERMINED VIA SITE VISITS AND EXISTING AS-BUILT INFORMATION. FIRE PROTECTION CONTRACTOR SHALL BE RESPONSIBLE FOR FIELD VERIFYING ALL EXISTING EQUIPMENT PRIOR TO DEMOLITION/RENOVATION.
- FIRE PROTECTION CONTRACTOR SHALL VISIT AND CAREFULLY EXAMINE THOSE PORTIONS OF THE BUILDING AND SITE AFFECTED BY THIS WORK BEFORE SUBMITTING PROPOSALS, SO AS TO BECOME FAMILIAR WITH EXISTING CONDITIONS AND DIFFICULTIES THAT WILL AFFECT EXECUTION OF THE WORK. SUBMISSION OF A PROPOSAL WILL BE CONSTRUED AS EVIDENCE THAT SUCH EXAMINATION HAS BEEN MADE AND LATER CLAIMS FOR LABOR, EQUIPMENT OR MATERIALS REQUIRED BECAUSE OF DIFFICULTIES ENCOUNTERED WILL NOT BE RECOGNIZED. IT IS TO BE UNDERSTOOD THAT UNFORESEEN CONDITIONS PROBABLY EXIST AND NEW WORK MAY NOT BE FIELD LOCATED EXACTLY AS SHOWN ON THE DRAWINGS. COOPERATION WITH OTHER TRADES IN EQUIPMENT ROUTING AS DETERMINED DURING CONSTRUCTION AND AS DIRECTED BY THE ARCHITECT/ENGINEER MAY BE NECESSARY AND IT IS INTENDED THAT SUCH DEVIATIONS SHALL BE CONSIDERED AS PART OF THIS CONTRACT. CONTRACTOR IS TO FIELD VERIFY DIMENSIONS OF ALL SITE UTILITIES, ETC., PRIOR TO BID AND INCLUDE ANY DEVIATIONS IN THE CONTRACT.

DESIGN NOTES:

- PER NFPA 13, 2002 EDITION SECTION 8.14.8.1.1: SPRINKLERS SHALL NOT BE REQUIRED IN BATHROOMS THAT ARE LOCATED WITHIN DWELLING UNITS, THAT DO NOT EXCEED 55 FT² (5.1 M²) IN AREA, AND THAT HAVE WALLS AND CEILINGS OF NONCOMBUSTIBLE OR LIMITED-COMBUSTIBLE MATERIALS WITH A 15-MINUTE THERMAL BARRIER RATING INCLUDING THE WALLS AND CEILINGS BEHIND FIXTURES. (RESIDENTIAL AREAS ONLY)

NFPA 13 2002 EDITION TABLE 9.2.2.1 AND SECTIONS 9.2.3.3 AND 9.2.3.4.1
NFPA SPACING REQUIREMENTS

PIPE SIZE	TABLE 1			TABLE 2	
	A	B*	C	LESS THAN 100 psi	MORE THAN 100 psi
1"	3'-0" MAX.	12'-0" MAX.	3" MIN.	4'-0"	3'-0"
1-1/4"	4'-0" MAX.	12'-0" MAX.	3" MIN.	5'-0"	4'-0"
1-1/2"-8"	5'-0" MAX.	15'-0" MAX.	3" MIN.	7'-0"	7'-0"

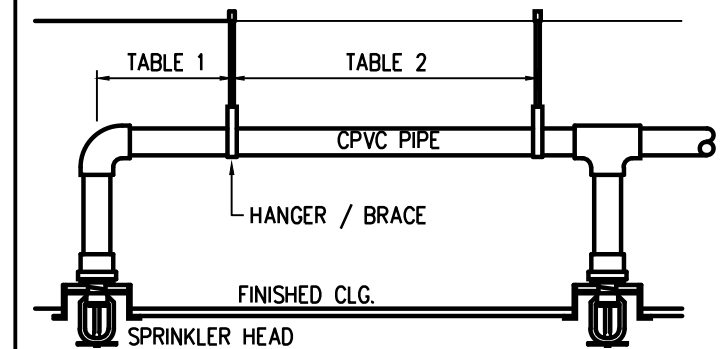
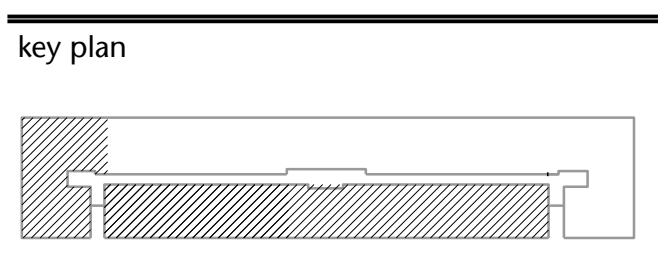


* MAXIMUM HANGER SPACING FOR STEEL PIPE

NOTES:
THE CUMULATIVE HORIZONTAL LENGTH OF AN UNSUPPORTED ARMORER TO A SPRINKLER, SPRINKLER DROP, OR SPRIG SHALL NOT EXCEED 24 IN.

CPVC PIPE HANGER LOCATION DETAIL

PIPE SIZE	TABLE 1		TABLE 2	
	LESS THAN 100 psi	MORE THAN 100 psi	LESS THAN 100 psi	MORE THAN 100 psi
3/4"	9"	6"	4'-0"	3'-0"
1"	12"	9"	5'-0"	4'-0"
1-1/4"	16"	12"	6'-0"	5'-0"
1-1/2"	24"	12"	7'-0"	7'-0"
2"	24"	12"	7'-0"	7'-0"
2-1/2"	24"	12"	7'-0"	7'-0"
3"	24"	12"	7'-0"	7'-0"

graphic scales

project: 21413
phase: PERMIT SET
date: 16 February 2015
revisions: 18 March 2015-Permit Revisions

BASEMENT FLOOR PLAN
BLDG 5804 - FIRE
PROTECTION

F-300