

1 BASEMENT DEMOLITION PLAN - EAST
 A101 SCALE: 1/8"=1'-0"

KEY NOTES

- 1 REMOVE PARTITION FINISH, BASE, FRAMING, FIRE BLOCKING, AND ASSOCIATED SUPPORT TO UNDERSIDE OF FLOOR DECK ABOVE.
- 2 REMOVE SUSPENSION, TILE, AND LIGHT FIXTURES FROM CEILING IN CORRIDOR.
- 3 REMOVE FINISH AND/OR FURRING ON EXISTING CMU WALLS TO UNDERSIDE OF FLOOR DECK ABOVE.
- 4 REMOVE VINYL TILE AND THRESHOLDS AT FLOOR IN CORRIDOR.
- 5 REMOVE WALL HUNG LAVATORY AND SUPPORT CHAIR AND SALVAGE FOR REINSTALLATION.
- 6 REMOVE MASONRY WALL AND STEEL LINTEL TO FLUSH WITH BRICK AND FLUSH WITH FINISHED CEILING ON EXISTING BUILDING.
- 7 REMOVE PARTITION FINISH, BASE, FRAMING, AND ASSOCIATED SUPPORTS AFTER SCHEDULED WITH OWNER. PROTECT EXISTING CEILING IN FITNESS CENTER DURING CONSTRUCTION.
- 8 REMOVE WIPES DISPENSER AND SALVAGE FOR REINSTALLATION.
- 9 REMOVE (5) MIRROR PANELS AND FRAME AND SALVAGE FOR REINSTALLATION.
- 10 REMOVE ALUMINUM DOOR & FRAME. SALVAGE CARD READER ENTRY SYSTEM FOR REINSTALLATION ON NEW DOOR.

GENERAL NOTES

- 1. PROTECT EXPOSED FIREPROOFING ON STEEL COLUMNS DURING CONSTRUCTION. PROTECT ALL FINISHES AND EQUIPMENT TO REMAIN AND BE USED IN NEW PLAN.
- 2. PROTECT FLOOR, CEILING, DOORS, AND PARTITIONS TO REMAIN THAT CONNECT TO CORRIDOR WALLS AFTER DEMOLITION.
- 3. SAW CUT CONCRETE SLAB AS NECESSARY FOR INSTALLATION OF NEW WASTE LINES BELOW SLAB. INFILL CUTS WITH CONCRETE AFTER WASTE LINE INSTALLATION.
- 4. REMOVE CERAMIC TILE FLOORING AND SETTING BED, AND ABANDONED WASTE & VENT PIPING REMAINING IN AREAS TO RECEIVE NEW APARTMENTS.

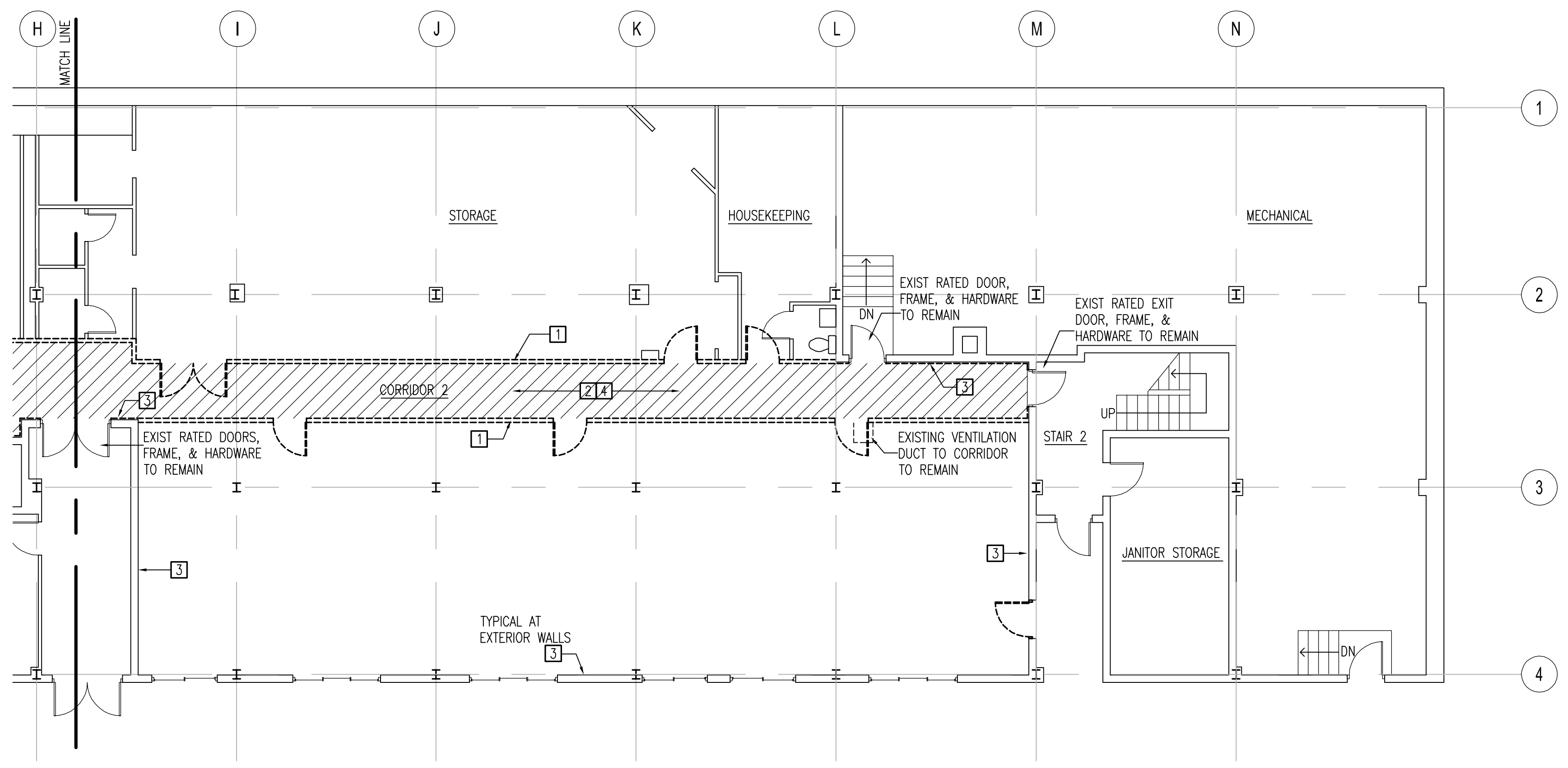
The Phoenix
 Apartments
 Interior Alterations

5802 Annapolis Road
 Bladensburg, Maryland 20710

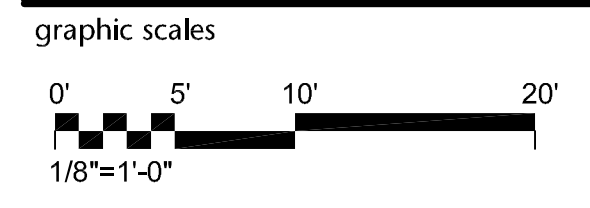
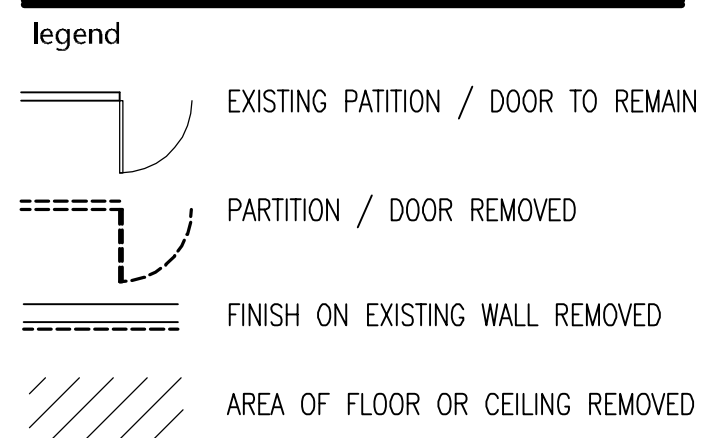
NOVITSKE ARCHITECTS

201 North Fairfax Street • Suite 33
 Alexandria VA 22314
 703 535 7899 • 703 535 8840 fax

I CERTIFY THAT THESE DOCUMENTS WERE PREPARED BY OR APPROVED BY ME AND THAT I AM A DULY LICENSED ARCHITECT UNDER THE LAWS OF THE STATE OF MARYLAND, LICENSE NUMBER 0013269, EXPIRATION DATE SEPT 27, 2016.



2 BASEMENT DEMOMLITION PLAN - WEST
 A101 SCALE: 1/8"=1'-0"



project: 21413
 phase: Permit
 date: 16 February 2015
 revisions: 18 March 2015 - permit revisions

Building 5800
 Demolition Plan